

1 2 3 4 5 6 7 8

REV	LOCATIONS	DESCRIPTION	DATE	REVISER	APPD

A

B

C

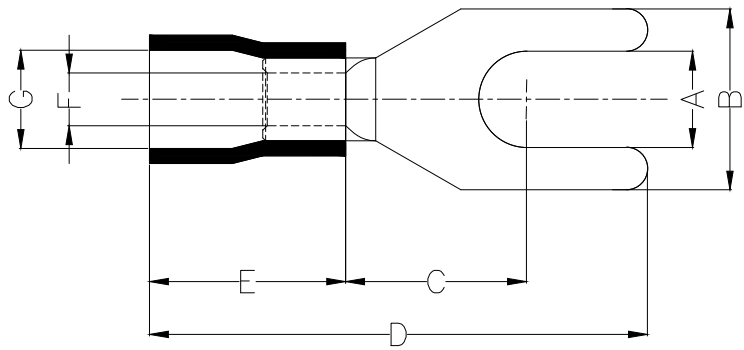
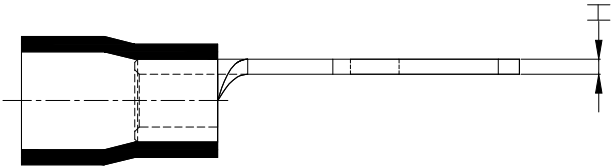
D

E

F

Notes:

- Material: Copper
- Insulator: PVC (UL 94V-0)
- Plating: Matte tin plated
- Wire range: 0.5~1.5mm² / (22~16AWG)
- Applicable screw: #10 UNC
- Temperature Range-Operating: 0°C~75°C
- Maximum electrical rating: 600V
- Max current: 19A



Dimensions							
A	B	C	D	E	F	G	H
±0.3	±0.5	±1	±1	±1	±0.5	±0.5	±0.05
5.3	8.1	6.5	21.5	10.5	1.7	4.4	0.7

PART NO.	Color Of Insulator
FRT02-00125040SARD2	Red
FRT02-00125040SABU2	Blue
FRT02-00125040SABK2	Black

<p>THIRD ANGLE PROJECTION</p>	GENERAL TOLERANCES (UNLESS SPECIFIED)		APPROVE BY	DATE	
	X. ±0.30	X.* ±5'	LEO	10/JAN/21	
	DESIGN UNITS METRIC(mm)		CHECKED BY	DATE	
	X.X ±0.20	X.X' ±2'	GISELLE	10/JAN/21	
SCALE	SIZE	X.XX ±0.15	X.XX' ±1'	DRAWN BY	DATE
5:1	A4	X.PYD ±0.10	X.PYD' ±0.5'	PYD	10/JAN/21

PART NO.	ITEM NO.	<p>Building Technology Cornerstone</p>
FYT02-00125050SAXX2	FYT02	
TITLE		REV 0 SHEET NO. 1/1
Spade tongue terminal		
THIS DRAWING CONTAINS INFORMATION THAT IS PROPRIETARY TO TXGA INDUSTRIAL ELECTRONICS(S.Z)CO.,LTD AND SHOULD NOT BE USED WITHOUT WRITTEN PERMISSION		

1 2 3 4 5 6 7 8